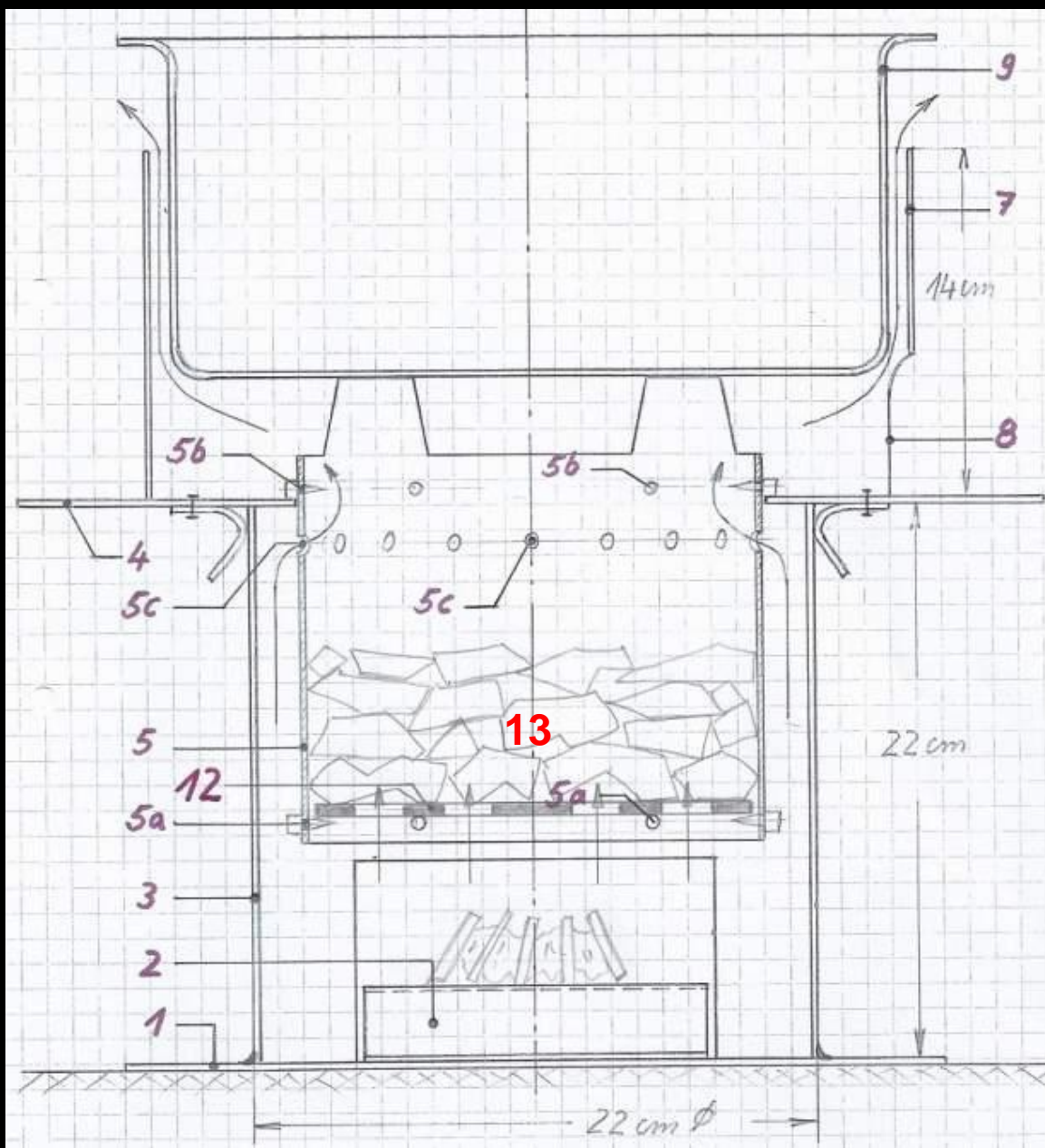


Fuel Saving Stove for Wood or Charcoal

Part 2: The Charcoal Mode



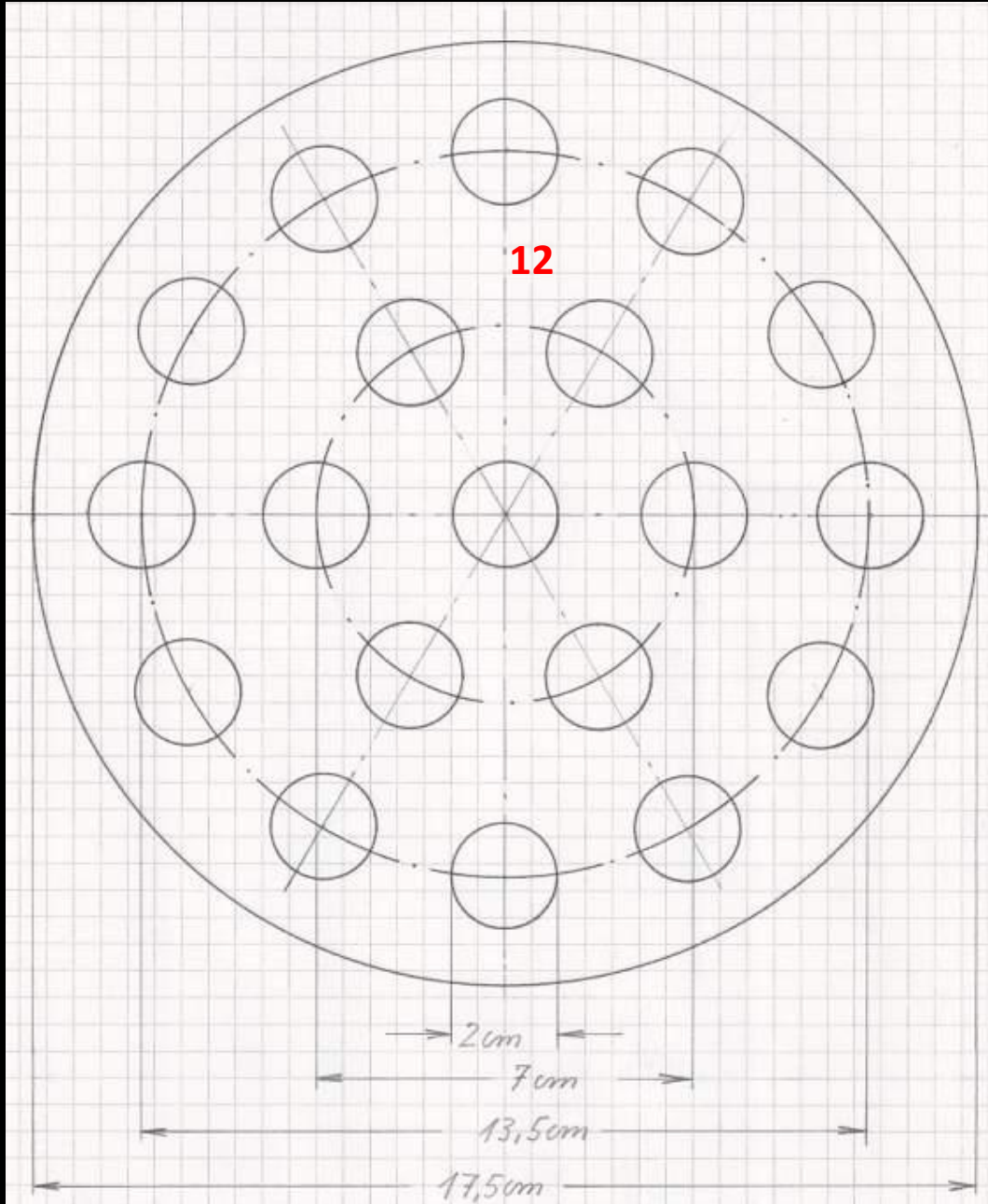
Plan of the Stove in the Charcoal Mode





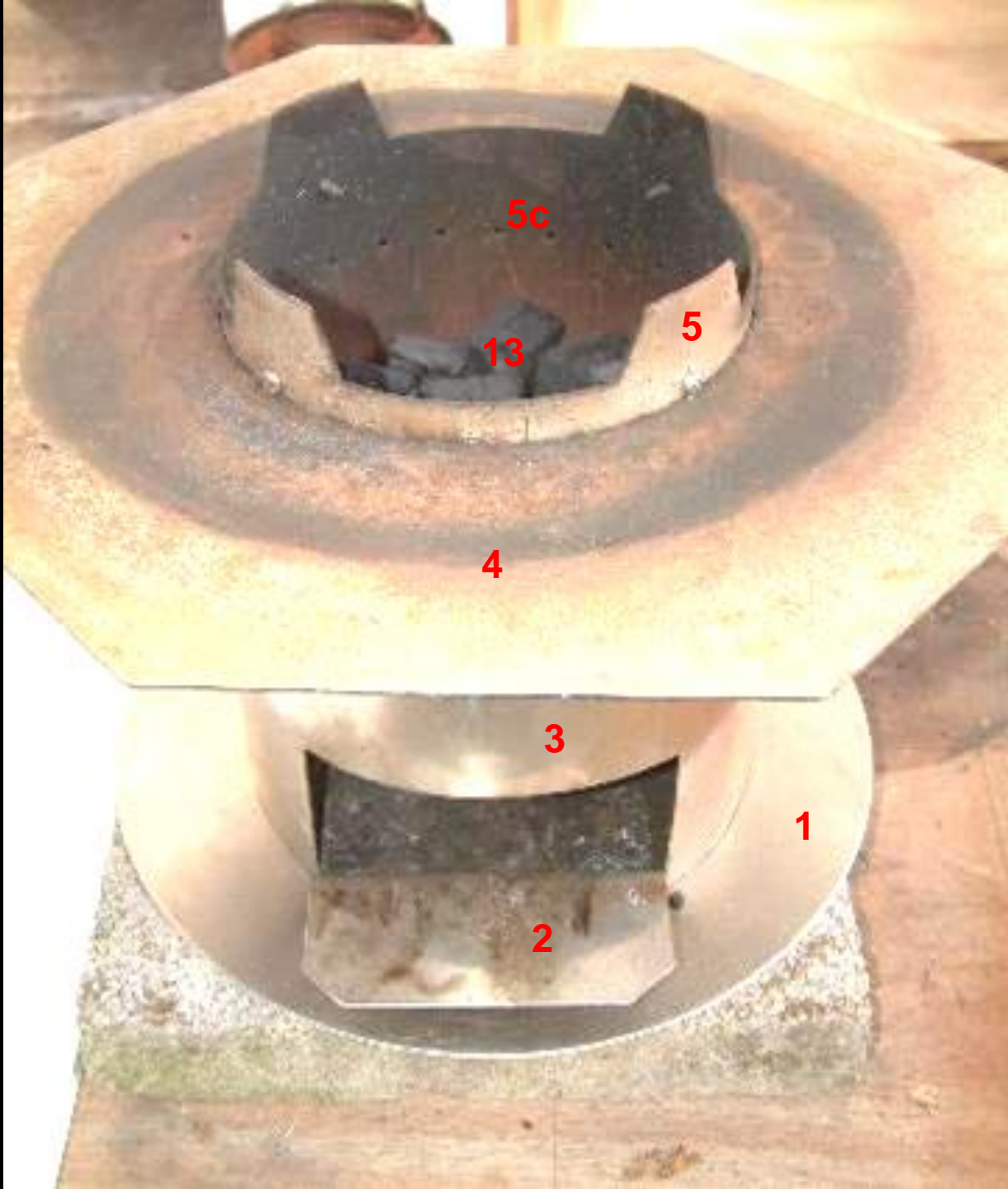
The charcoal plate (No. 12) replaces the fire ring.

Plan of the Charcoal Plate





The charcoal plate has replaced the fire ring.



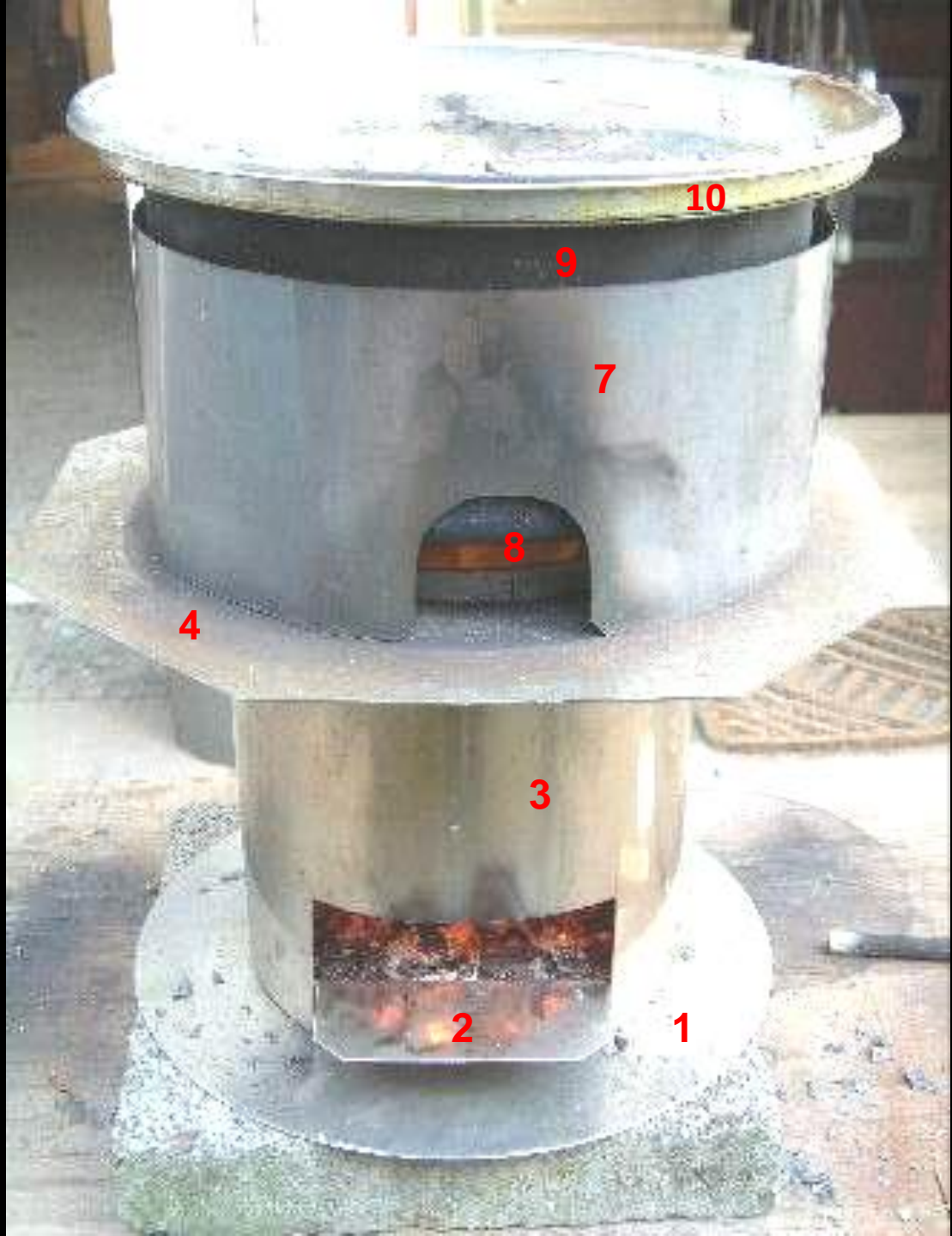
Now the stove can be loaded with charcoal (No. 13). Note that the charcoal must remain well *below* the air holes (No. 5c). Otherwise, the stove will not reach maximum efficiency in the charcoal mode!



In order to **ignite the charcoal**, place some wooden splints and some pieces of newspaper on the wood holder (No. 2). Ignite these and push the wood holder into the stove. Smoke will be produced only until the charcoal has been ignited. Afterwards, the stove will be smokeless.



Now there are smokeless flames.



Now the charcoal delivers smokeless flames. Heat the pot always covered with a lid (No. 10) in order to save fuel.



Smokeless flames reach the pot (No. 9)!



And water boils after a short time!

**If you have questions
or need further informations:**

Contact

richardf@web.de